

Sekai wa Hitotsu

Gifu International Center (GIC)

**International Exchange &
Multiculturalism Information Magazine**

February 2023 No.155

© 岐阜県 清流の国ぎふ・ミナモト # 0195



Gifu Prefectural People's World Convention held for the first time!

On both Saturday 29th and Sunday 30th of October, Japanese and foreign residents of Gifu Prefecture gathered for the first ever Gifu Prefectural People's World Convention. The event was held at the OKB Fureai Kaikan and Salamanca Hall in Gifu city, and some 600 people from various countries attended the commemorative ceremony on the 29th.

The convention was organized by Gifu Kenjinkai International (GKI), comprised of 26 prefectural associations (Kenjinkai) from 17 countries, including Japan, and marked the first time that Gifu Kenjinkai gathered from all over the world.

The commemorative ceremony held on the 29th opened with "Gujo-odori" (traditional dance from Gujo city), one of Japan's three main bon festivals, which honor ancestral spirits. Last year Gujo-odori was registered as a UNESCO Intangible Cultural Heritage. A concert followed which included a performance by Gifu city-born two-time Grammy award-winning trumpeter Shunzo Ono, as well as a collaborative performance between Mino-born professional storyteller Kyoko Kanda, Hashima-born pianist Yuya Goto, and Tarui-born Koto player Ryusei Shikano. The performance was in the traditional story-telling style and introduced their predecessors who ventured from Gifu out into the world, and the ceremony highlighted the pride and charms of Gifu Prefecture.

Additionally, the ceremony concluded with a declaration pledging to 'strengthen the network between Gifu Prefecture and Kenjinkai', 'promote Gifu's attractions' and 'train the younger generation'. It also included the signing of a memorandum of understanding between GKI and Gifu Prefecture to cooperate in the overseas expansion of prefectural products.

On the 30th the attendees enjoyed cultural exchange activities which included the display and sale of prefectural products, the introduction of participating Kenjinkai, workshops to experience Gifu's traditional culture, and a presentation contest for youth study abroad support.



▲ Signing of a memorandum of understanding between Gifu Prefecture and GKI on the overseas expansion of prefectural products

GKI Exchange Experience Bus Tour

After the Gifu Prefectural People's World Convention, a 3-day bus tour of Gifu Prefecture took place from Monday 31st October to Wednesday 2nd November, during which participants from Kenjinkai toured Gifu Prefecture and experienced its attractions.

On the first day, the tour group experienced Japanese sword forging in Seki, and Mino washi papermaking, as well as wandering the traditional streets of Mino city. Each participant was able to experience aspects of the traditional industries of Gifu Prefecture, such as hitting iron heated to high temperatures with a mallet during the sword forging, and making their own unique sheet of washi paper during the papermaking experience.



▲ Shinhotaka ropeway; view from the observation deck



In Gero, where the tour participants stayed the night, an exchange meeting was held with people involved in international exchange in Gero city. In groups, the participants introduced themselves and discussed places in Gifu that had made an impression on them.

On the second day, they visited Shirakawa-go, one of the most famous tourist attractions in Gifu, and learnt about the local people's way of life. The weather was unfavorable at the Shinhotaka ropeway, but there was a view of autumn leaves towards the summit of the mountains, and from the observation deck the snowy peaks of the northern Japanese Alps could be seen. The Kenjinkai members were thrilled to see a striking view special to Japan.

On the third day, the tour group went to Gujo to take part in Gujo-odori. Many of the Kenjinkai tour participants were from Brazil and so had fun learning the Gujo-odori, due to their love of samba and other such dance styles.

After the 3-day bus tour, the Kenjinkai members who participated seemed very satisfied with the opportunity to experience Gifu Prefecture's industries, nature, and traditions. Further opportunities for cultural exchanges in the future will enable increased coordination between Gifu Prefecture and Kenjinkai.

◀ Learning Gujo-odori

Training held for medical interpreter volunteers

Here at the Gifu International Center, we operate the Gifu Prefecture Medical Interpreting Volunteer Mediation Service, which provides volunteer medical interpreters with a certain level of knowledge and skills (in Portuguese, Mandarin, Tagalog and Vietnamese) upon request from medical institutions, so that foreign nationals who are not fluent in Japanese can receive medical care without difficulty.

On the 3 days listed below, online training was held so that existing volunteer medical interpreters could improve their skills, and new volunteers could receive training. Due to the need to take privacy into account and have specialist skills, medical interpreting volunteer work and general interpreting volunteer work have numerous differences. Therefore, lectures were given by Aguri Shigeno and Airi Takashima from the non-profit organization Multicultural Center Kyoto, on what kind of skills and frame of mind are necessary.

Zoom lecture

First session, Saturday 22nd October 10:30-12:00, 13:00-14:30

For the first half, the role of medical interpreters, the Japanese healthcare system, interpreting situations and content, their characteristics, and notable points were explained in an easily understandable way, while following the procedure of a hospital visit.

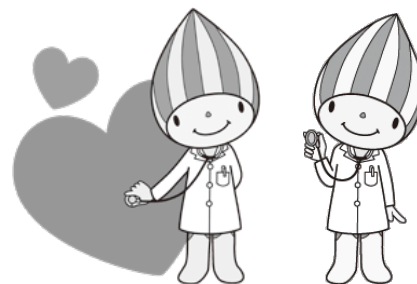
Second session, Saturday 29th October 10:00-12:30

Participants were quizzed on the names of organs in the body and diseases in Japanese, and wracked their brains asking about the skills required for medical interpreting.

Role play interpretation practice on Zoom

Third session, Saturday 5th November 10:00-12:00

The participants were divided into groups and practiced role-playing to interpret a conversation between a doctor and a patient in an examination room. The procedures, points, and actions to be carried out during medical interpreting work were confirmed through this practical training, using scenarios simulating internal medicine outpatients, neurosurgery, and orthopedic surgery.



5 Copyright Gifu Prefecture, Minamo, the Land of Clear Water

Japanese language classes to promote multiculturalism

From the 12th of October until the 16th of November 2022, every Wednesday from 18:30 to 19:45, we held online Japanese language classes to promote multiculturalism. The classes took place on Zoom, and were aimed at Vietnamese people living or working in Gifu Prefecture. The aims of these classes were to give the participants a solid foundation of vocabulary and expressions commonly used in daily conversation, and to enable them to confidently use simple Japanese to confirm information, explain things and their circumstances. The teacher was also Vietnamese, so the participants were able to interact in both their native language and in Japanese, which motivated them to learn and allowed them to deepen their understanding of Japanese culture. There were four participants including a Vietnamese intern living in Gujo city, a university student, and someone who moved to Japan after getting married. The classes were well-received by the participants, who were very satisfied with the content and would like to continue studying Japanese in the future.



Below is the class content. We look forward to welcoming more Vietnamese participants in the future!

- Session 1: Greetings, self-introduction, talking about your job
- Session 2: Reading easy signs, etc., explaining things
- Session 3: How to confirm information, how to make requests
- Session 4: How to ask for permission
- Session 5: Explaining your circumstances and what happened
- Session 6: How to give your opinion on the classes, etc., talking about what you want to do in the future

The rules for cyclists changed from the 1st of October 2022

英語



○ Bicycle insurance is now compulsory

- Please take out liability insurance for damages.
- The following insurance policies cover damages caused by accidents involving cyclists where an injury has occurred.

Insurance policies with schools and PTAs as a contact point include; Elementary and Junior High School Comprehensive Guarantee Plan, High School Comprehensive Guarantee Plan, and the National PTA Federation Liability Compensation Plan.

There are also options for voluntary insurance, in addition to mandatory insurance, that include special clauses.

- If the bicycle has a TS mark of inspection, it is covered for damages within one year of the date of inspection.

*It is not covered if it has been over a year since the date of inspection.

There have been cases where large sums of money have been paid in damages

An elementary school 5th grader was involved in a head-on collision with a female pedestrian while cycling down a hill...

The woman suffered serious injuries that rendered her unconscious.

A guardian held responsible for the supervision of the child was ordered to pay approximately **95 million** yen.

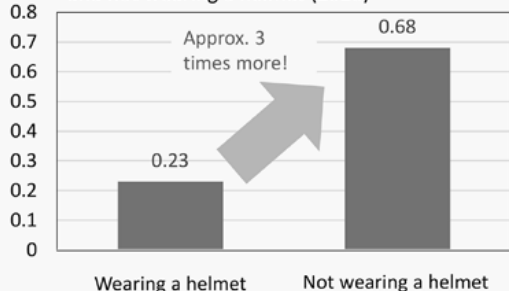
Please make sure all family members have insurance

○ Please make an effort to wear a helmet



Wearing a helmet saves lives

Comparison of mortality rates for those wearing and not wearing a helmet (2020)



(National Police Agency Data)



Let's follow traffic rules and be polite to fellow road users, and ride safely

Contact details for enquiries

Gifu Prefecture, Environmental Living Department, Prefectural Citizen Living Division

TEL : 058-272-1111 (phone extension 2391) FAX : 058-278-2889



GIFU International Center TEL:058-263-8066

You can consult about status of residence, COVID-19, health, taxes, welfare, etc. in your own native language for free

introduction of activity-based organizations in Gifu!

The Takayama and Denver Friendship Association

The Takayama and Denver Friendship Association was established with the main purpose of promoting mutual exchange between the cities of Takayama and Denver (Colorado, USA). The two cities entered into a sister city partnership in 1960, and so in 2020 celebrated 60 years of this relationship. To date, more than 2000 people including official delegations and high school students have carried out reciprocal visits, allowing exchange to be deepened in numerous fields, such as culture and medical treatment.

As a token of cultural exchange, Denver has a model of a Takayama Festival Yatai, or float (Kizunatai; two thirds the size of the original), gifted by Takayama city. To commemorate 60 years of this partnership, students from a technical high school in Takayama travelled to Denver and worked with local people to repair damage to the model Yatai.

Due to the COVID-19 pandemic, in recent years sister city exchange activities have been held online, however in October last year a delegation from Denver visited Takayama for the first time in 3 years. The delegation consisted of 12 members of the Denver Takayama Sister City Committee, some of whom had been friends with Takayama's participants for some time. They strolled through Takayama's old town and experienced different aspects of Japanese culture, including wearing a kimono, participating in a tea ceremony, and applying gold leaf. The Mayor of Takayama and members of the Friendship Association also took part in an exchange meeting, exemplifying the bonds between the two cities. Efforts will be made to continue to deepen the cultural exchange between these two cities in the future.

Established 1977



Denver, 1964



Repairing the model Yatai, 2019



Friendship hill, Takayama



Denver delegation at Takayama Jinya

Issued By

Gifu International Center (GIC)

Gifu Chunichi Building 2F,1-12 Yanagase Dori, Gifu City, 500-8875

Tel: 058-214-7700 Fax: 058-263-8067

E-mail: gic@gic.or.jp URL: <https://www.gic.or.jp>

Opening hours: Sunday to Friday 9:30 – 18:00

Closed: Saturday, Public Holidays, New Year Period

Languages: English, Chinese, Portuguese, Tagalog, Vietnamese

Date of Publication

February 1, 2023

(Published three times yearly in July, November, and February)

