

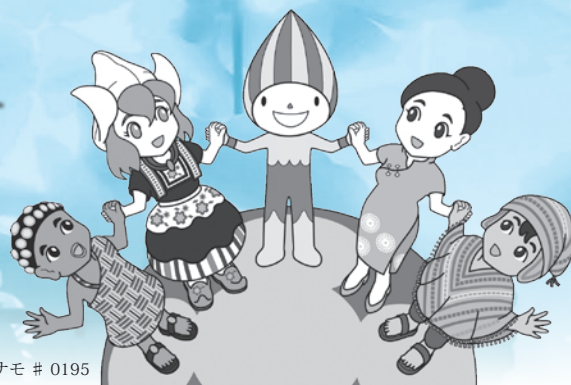
Sekai wa Hitotsu

Gifu International Center (GIC)

International Exchange & Multiculturalism Information Magazine

November 2020 No.148

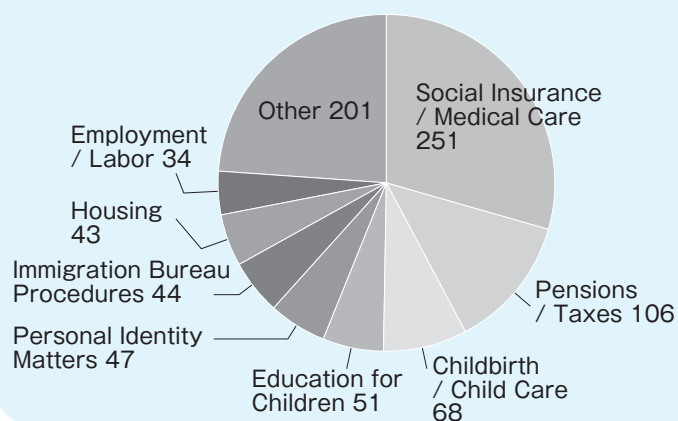
© 岐阜県 清流の国ぎふ・ミナモ # 0195



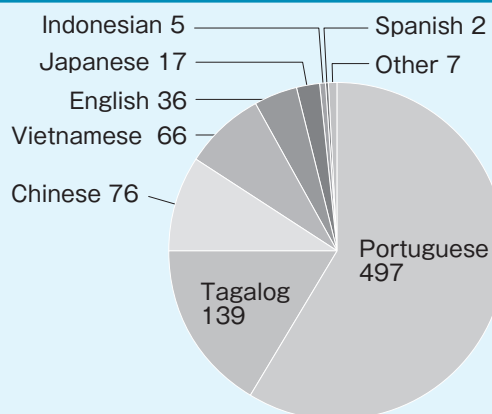
Gifu Prefectural Consultation Center for Foreign Residents 1 Year Anniversary

It has been one year since the establishment of the 'Prefectural Consultation Center for Foreign Residents', which was established to provide easily accessed support to foreign residents with issues faced in their daily lives in foreign languages.

Breakdown of Consultation by Type



Breakdown of Language



There were a total of 845 consultations in 2019; with the largest number of consultations related to social insurance and medical care, followed by pensions/taxes and childbirth/child care consultations. By language, consultations in Portuguese (497 cases) accounted for more than half of all consultations.

The Gifu Prefectural Consultation Center for Foreign Residents will continue to support foreign residents with resolving issues they may have, in cooperation with public institutions.

Skype Consultation (Video Call) applications commenced May 2020



Foreign language counselor will take calls / chats

Language	Account Name	Day	Hours
Portuguese	GIC POR	Tue/Thurs	10:00 ~ 12:00 13:00 ~ 16:00
Tagalog	GIC TAG	Wed/Fri	
Vietnamese	GIC VIET	Tue/Thurs	



Lifestyle Information for Foreign Residents



Information about COVID-19

Gifu Prefectural Consultation Center for Foreign Residents (located within the Gifu International Center) is coordinating with the appropriate organizations and is providing telephone interpreting services on calls related to COVID-19 consultations for non-Japanese residents living in Gifu Prefecture. If you wish to know more about this, please call the telephone number below.

However, please note that medical interpreting etc. may be unavailable.

Gifu Prefectural Consultation Center for Foreign Residents

☎ 058-263-8066

Opening Hours : Monday-Friday 9:30-16:30

*Excluding New Year Holidays/Public Holidays

Languages Available : English, Chinese, Portuguese, Tagalog, Vietnamese, Korean, Indonesian, Thai, Khmer, Nepalese, Burmese, Spanish, Malay, Mongolian



See our website and Facebook page for various information related to COVID-19 in multiple languages. You can also refer to the list of COVID-19 cases reported in Gifu Prefecture, and the leaflet on how to protect yourself from viral infectious disease and other information provided in multiple languages online.

The 'STOP!COVID-19' leaflet has been translated into 14 different languages and is available on our website for download.



Gifu Prefecture QR Code Infection Alert System

If cases of infection occur at locations such as stores, customer used facilities, events etc. used by an unspecified large number of visitors in Gifu Prefecture (excluding Gifu City), a message will be sent by the system to those who visited the same location on the same day, promoting the proper measures to be taken, and thus preventing the further spread of infection.

Visitors need only to register their email address, meaning that their privacy is also protected.

How to Use

- 1) Scan the QR code on display in the store etc. and access the registration form. *Registration is necessary per visit
- 2) Enter your email address, and register. *Check in advance that you can receive emails from @govt.pref.gifu.jp
- 3) Receive the Registration Complete email.

Benefits of Registering: Get notified of infection among visitors on the same day to the same store etc., allowing you to take necessary measures quickly.

Please note that registered email addresses

- 1) are protected strictly by Gifu Prefecture's security measures.
- 2) are only used with the purpose of preventing the further spread of infection.
- 3) are deleted 60 days after registration.



*QR code is a trademark of Denso Wave

Preparation for Natural Disasters

Why not check out our multi-lingual Disaster Prevention Guide?



Japan is known for its many natural disasters, such as unpredictable earthquakes, and heavy rainfall leading to major disasters which has been occurring increasingly in recent years, and so on.

At the Gifu International Center, we have created 3 language combinations of a multi-lingual pocket-sized Disaster Prevention Guide for foreign residents. The purpose of the guide is to share accurate information on how to protect yourself in times of natural disaster, and to help foreign residents to be prepared for a natural disaster at any time. The guides are available in combinations of Japanese/English/Chinese, Japanese/Portuguese/Tagalog, and Japanese/Vietnamese.

The guide is printed on paper that is durable even if it gets wet and is a handy pocket-size designed to be easy to take with you at all times. While it is very important to be aware of your nearest evacuation center, if a disaster were to occur, you can get the help you need to reach your nearest evacuation center where you can get necessary help by showing the cover page that says 'Please take me to an Evacuation Center' in Japanese. This guide is distributed from our center to city and town government offices, as well as to other related locations and organizations that are affiliated in some way with foreign residents. Please make use of this guide at local disaster prevention courses and to increase your awareness of disaster prevention in your daily life.

However, due to the current state of COVID-19, there are many people who are concerned about the risks of evacuating to an evacuation site. Therefore, as those who have contracted COVID-19 carry the risk of spreading the virus, are required to avoid contact with others as much as possible.

Please note the following information regarding evacuating etc. in the case of a natural disaster. Please refer to the points below, and have a discussion with your family to prepare.



Emergency Evacuation amid the Coronavirus Crisis

1. Prepare ahead and evacuate early

Many people gather in evacuation shelters and this increases the risk for infection.

Set your mind to evacuate early and save your own self ("self-help").

- Check if you live in a disaster-prone area (For reference: Gifu Prefecture's Mountains and Rivers Hazard Zones Map: <https://kikenmap.gifugis.jp/>)
- Consider evacuating to locations other than evacuation shelters (to a relative or friend's house, or to a higher floor of your own dwelling, etc.)
- Prepare other essentials like masks, soap (disinfectant), thermometer, towel, slippers, vinyl gloves, and the like.
- Prepare your medications, health supplements, etc.
- Check weather conditions using sources such as the Japan Meteorological Agency's website and aim to evacuate early.

2. If you go to an evacuation shelter

Take the following measures to avoid infecting others:

- Keep at least 2 meters apart from the person next to you.
- Always wear a mask.
- Wash hands and disinfect thoroughly after touching surfaces touched by many people such as doorknobs.
- Take your body temperature and check your physical health every day.
 - ◆ Do this 3 times a day (morning, noon, and evening).
 - ◆ Report to the Health Team if you have a fever or are not feeling well.
- Do not eat anywhere apart from your living space.





Specialist Consultations

Nagoya Regional Immigration Bureau Staff Consultations

A member of staff from the Nagoya Regional Immigration Bureau will carry out consultations regarding Japanese Immigration and resident status for foreign residents in Japan.

Dates	Venue
Nov. 19 (Thurs) 2020	Seino Main Gov. Bldg (Ogaki City, Ezaki-cho 422-3)
Dec. 17 (Thurs) 2020	Gifu International Center
Jan. 21 (Thurs) 2021	Kamo Main Gov. Bldg (Minokamo City, Kobi-cho, Shimo-kobi 2610-1)
Feb. 18 (Thurs) 2021	Gifu International Center
Mar. 18 (Thurs) 2021	Seino Main Gov. Bldg (Ogaki City, Ezaki-cho 422-3)

Notary Public Consultations

A notary public will answer inquiries about residence status, international marriage/divorce, business permits, debt, motor vehicle accidents, and other problems or issues.

Dates	Venue
1st Thurs. Every Month	Gifu International Center

Mental Health Consultations

Brazilian and Filipino counsellors hold consultations regarding mental health in respective native languages.

Mental Health Consultations (Portuguese)

Dates	Venue
4th Sun. Every Month	Gifu International Center

Mental Health Consultations (Tagalog)

Dates	Venue
2nd Sun. Every Month	Gifu International Center

Dates stated above are subject to change.
Please inquire in advance if you would like to attend a consultation.

Consultation Reservations / Inquiries

Gifu International Center

Gifu Chunichi Building 2F, 1-12 Yanagase Dori, Gifu City ☎ 058-263-8066

Issued By

Gifu International Center (GIC)

Gifu Chunichi Building 2F,
1-12 Yanagase Dori, Gifu City, 500-8875
Tel: 058-214-7700 Fax: 058-263-8067
E-mail: gic@gic.or.jp URL: <https://www.gic.or.jp>
Opening hours: Sunday to Friday 9:30 - 18:00
Closed: Saturday, Public Holidays, New Year Period
Languages: English, Chinese, Portuguese, Tagalog, Vietnamese

Date of Publication

November 1, 2020
(Published three times yearly in July, November, and February)

*2020 July issue was suspended due to the spread of COVID-19.

