

Sekai wa Hitotsu

Gifu International Center (GIC)

**International Exchange &
Multiculturalism Information Magazine**

November 2018 No.143

© 岐阜県 清流の国ぎふ・ミナモト # 0195



News from GIC

Hello Gifu, Hello World 2018: Foreign Residents take to the Stage for a Nodojiman Competition!

Every year, GIC works with Gifu International Association to host the international exchange event "Hello Gifu, Hello World". This large-scale event aims to help people learn more about international exchange and develop cross-cultural understanding by featuring international exchange organizations based in Gifu, and introducing their work and their countries' cultures through various performances and stalls.

This year's event was held on Saturday, June 16, a rare sunny day during the rainy season, and marked the 30th anniversary since Hello Gifu, Hello World was first held. Like every year, the festive event took place at the Waku Waku Hiroba in front of Takashimaya and Cinex Hall.



As is tradition, the event opened with the Waku Waku Hiroba stage playing host to dance groups from various countries performing the Flamenco and belly dancing.

The audience, made up of prefectural residents as well as those from further afield, enjoyed the steps and unique rhythms of the dances. The opening performances were followed by this year's main event, the Nodojiman Competition. There were 14 performances by individuals from 9 different countries: the USA, Peru, India, Nepal, Sri Lanka, the Philippines, Vietnam, China, and Russia. Some sang in their own language, while others chose to perform Japanese songs. As the participants sang, passersby were drawn by the sound of their singing, and the performances attracted a crowd from the initial round. The applause grew louder as Argentina-born Nikkei enka singer Vanesa Oshiro came on stage to perform.

Down at the booths in Cinex Hall, the international organizations of various countries from the Americas, Asia, Africa, and Oceania who are engaged in grass-roots exchange in Gifu introduced the work of their organizations and their cultures.

Visitors were able to experience and enjoy the variety of cultures represented as they tried special foods and drinks, purchased folk crafts, tried on folk dress, and had business cards made in other languages, as well as met and interacted with other visitors.



Network Meetings for Foreign Consultants

The population of foreign residents in Gifu has surpassed 50,000 and greater numbers are choosing to settle here. Those who work as foreign consultants deal with questions and concerns regarding a diverse range of issues from this growing population.

We have recently set up regular network meetings for foreign consultants in order to create a network of cooperation between foreign consultants across the prefecture and thus better respond to the needs of foreign residents.

Foreign consultants mainly provide linguistic assistance to foreign residents in administrative procedures at city halls and other local government offices.

Our second meeting was held at Frevia in Kani-shi, where we heard from Ms. Fujikawa Junko (teacher at Yokkaichi Shiritsu Sasagawa Nishi Elementary School; ex-Nikkei community youth volunteer with JICA) about children of foreign nationality with developmental disabilities.

Ms. Fujikawa explained how when children of foreign nationality are experiencing learning difficulties, it is often hard to pinpoint whether the child has a language issue or a disability. What is important is to recognize the distinctive qualities of each child and provide learning support which meets their individual needs. We also learnt about the importance of local government organizations, multicultural social workers and other key individuals working together to support the child in question.

After hearing from Ms. Fujikawa, we divided into small groups and used hypothetical scenarios to think through how to provide support to children in various circumstances.

We brainstormed different support strategies that could be utilized by schools, teachers, parents, children, and local government organizations, and discussed how children can be better supported when these various groups work together.

Relationships between the foreign consultants developed as they shared the issues they face and useful information with one another.

Please look forward to the work of these foreign consultants in your local region as they continue to develop their skills through training sessions!



The History of Relations between Gifu and China

This year marks the 40th anniversary since the Treaty of Peace and Friendship between Japan and China was signed, as well as the 30th anniversary of the Friendship Agreement between Gifu Prefecture and Jiangxi Province. We are taking this opportunity to look back on the history of relations between Gifu and China, and in particular, Jiangxi Province.

● The name “Gifu” comes from China

Oda Nobunaga gave Gifu its present name based on two locations in China. The first character, “岐”, comes from “Qishan (岐山)”, a legendary mountain from which King Wen of Zhou sought to unite all of China, while the second character, “阜” comes from “Qufu (曲阜)”, the birthplace of Confucius. Gifu is the only prefecture in Japan whose name finds its origin in China.

● Exchange between Gifu City and Hangzhou began before the restoration of Sino-Japanese diplomatic relations

In 1962, a delegation including the head of Gifu Shinbun (then Gifu Nichi Nichi Shinbun), Yamada Takeo, visited Hangzhou. Epigraphs with the message, “May the people of China and Japan be friends for generations to come” were exchanged between the cities’ mayors, and by 1963, stone monuments with this inscription had been erected in both cities.



● Friendship relations between China and Gifu Prefecture and its municipalities

	Municipality/ Prefecture	Municipality/ Province	Date Established
1	Gifu-shi	Hangzhou, Zhejiang	Feb. 1979
2	Mizunami-shi	Liling, Hunan	Jan. 1987
3	Gifu-ken	Jiangxi Province	June 1988
4	Ogaki-shi	Handan, Hebei	Oct. 1988
5	Ono-cho	Shaoyang, Hunan	Oct. 1996
6	Seki-shi	Huangshi, Hubei	Dec. 1997
7	Takayama-shi	Lijiang, Yunnan	March 2002
8	Anpachi-cho	Fengcheng, Jiangxi	Aug. 2007

● History of relations between Gifu and Jiangxi

◆ Mutual visits between high-level officials

Exchange between Jiangxi and Gifu began in 1984, when the Japan-China Gifu Parliamentary Group visited Jiangxi for the first time. On June 21, 1988, the Prefecture-Province Friendship Agreement was entered into, and mutual visits have been conducted for the 5th, 10th, 20th and 25th anniversaries. For the 30th anniversary this year, a delegation from Jiangxi Provincial Government led by the vice-governor, Mao Weiming, visited Gifu in September, and a delegation from Gifu to Jiangxi led by Governor Furuta

Jiangxi Province
Area: 166,900km²
(around 16 times greater than Gifu)
Population: 46.221 million
(around 23 times greater than Gifu)
Capital city: Nanchang

is also scheduled. These events will mark a new stage in friendship relations between Gifu and Jiangxi.



◆ Exchange in the agricultural and forestry sectors

In the agricultural sector, the Gifu Horticulture Specialties Promotion Association and the Jiangxi Flowers and Plants Association work together to share expertise and take in trainees. In the forestry sector, afforestation work and planting of commemorative trees has taken place in Jiangxi.

◆ Cultural exchange

Gifu has played host to the Jiangxi Acrobatics Troupe and an Erhu concert. Students from Gifu and Jiangxi pay each other visits, and exchange also takes place between Jiangxi University of Technology and Nakanihon Automotive College. In the sports sector, Jiangxi and Gifu have a joint table tennis team that participates in competitions.

◆ Grassroots exchange

Grassroots exchange takes place through the Gifu Japan-China Friendship Association and the Gifu Japan-China Association. In 2008, the Gifu Japan-China Friendship Association presented Jiangxi Provincial People’s Association for Friendship with Foreign Countries with *Waheiryu* (a bronze statue of a dragon’s head). In 2013, the Gifu Japan-China Association presented Gifu Prefectural Government with the statue “The Shining Sprout.”

◆ Establishment of business operations in Jiangxi

Companies such as Rocks, Katayama Hosei, Icot Ryowa and Seiwa Ceramics have set up local subsidiaries in Jiangxi Province to produce clothes, towels, and ceramics respectively.

◆ Intake of human resources

Gifu has welcomed 90 Overseas Technical Trainees and 14 Coordinators for International Relations from Jiangxi. We have received messages from two of these past CIRs. Xiao Yan (2006 – 2008) writes, “I feel fortunate to have been able to make a contribution, however small, to the numerous commemorative events during the 20th anniversary celebrations between Jiangxi and Gifu. I am indebted to the individuals and organizations I worked with during that time, and try to return their kindness whenever I encounter Japanese people as part of my work as a university teacher.” Wu Shuang (2016 – 2018) writes, “Thanks to the many experiences I had during my time living and working in Gifu, as well as the friendship of many people, I have great memories of my time there. Gifu is like a second home to me. I look forward to seeing you all again someday.”

Lifestyle Information for Foreign Residents

A new residency program for fourth-generation Japanese living overseas (*Nikkeiyonsei*) has started, making it easier for fourth-generation Japanese to live and work in Japan.

From July 1,
2018

Objective of the Program

- This program aims for participants to become bridges between Japan and overseas Japanese communities. It seeks to increase the understanding and interest of fourth-generation Japanese towards Japan through assistance from supporters, as well as activities which familiarize them with Japanese culture.
- Individuals who fulfill the required conditions may stay in Japan for a maximum of 5 years.
- Participants in the program are expected to serve as a bridge between Japan and their local Japanese communities after returning.

Eligible Fourth-generation Japanese

Those who fulfill the following conditions are eligible for the program. (However, there is an annual acceptance limit.)

Category	Details
Age	Between 18 and 30 years old
Conduct	No criminal record in country of origin
Health	In good health and possesses health insurance
Family	Not accompanied by family members
Means of Living	Taking into account savings and employment prospects after arrival in Japan, guarantee of sufficient means of living after entering the country.
Funds for Returning to Country of Origin	Has secured funds for returning to country of origin.
Japanese Ability	At time of entry: ability to understand basic Japanese (equivalent to JLPT N4)
	At the time of extending period of stay: When staying in Japan for over 2 years in total ➔ ability to understand Japanese used in everyday situations (equivalent to JLPT N3)

Who are Supporters of Fourth-Generation Japanese Descendants?

- Supporters provide volunteer direction and assistance to participants in the program without compensation. They offer guidance in learning about Japanese culture and daily life, as well as assistance with immigration procedures.
- Individuals or nonprofit corporations can serve as supporters.
 - ※ A supporter is required in order to participate in this program.
 - ※ If you are looking for a supporter, please have a look at the Ministry of Justice's website below.
- For further details, please see "Guidelines for Fourth-Generation Japanese" and "Guidelines for Supporters Accepting Fourth-Generation Japanese". For specific information about how to apply, please see the Ministry of Justice's website below. (http://www.moj.go.jp/nyuukokukanri/kouhou/nyuukokukanri07_00166.html)

Lifestyle Information for Foreign Residents

How to Avoid Catching or Spreading Influenza

In order to prevent the spread of influenza, it is important for each of us to make sure we do not contract or spread the virus. Please follow the guidelines below to avoid catching or spreading influenza.

◆ To avoid catching the flu...

- When going out, avoid crowded places as much as possible.
- Wash your hands before meals and when you arrive home.
- Make sure you get enough sleep and nutrients.
- Keep your room at an appropriate temperature and humidity.



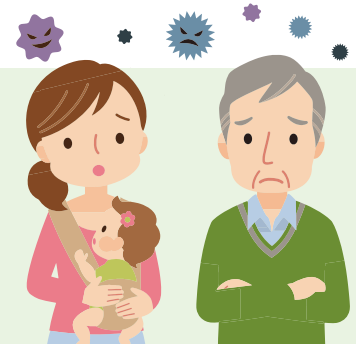
◆ To avoid spreading the flu...

- Follow appropriate etiquette when coughing or sneezing. (Cover your nose and mouth with a tissue or handkerchief so as not to spread germs.)
- If you are experiencing symptoms such as coughing and sneezing, wear a mask when going out, and avoid going out as much as possible.



◆ For those at high risk of developing flu-related complications...

- The elderly, those who are pregnant, infants, and those with underlying conditions such as a chronic cardiopulmonary disease, diabetes, or kidney disease, are at high risk of developing complications after contracting the flu. Please see a doctor sooner rather than later if you fall under any of these categories.



◆ The Influenza Vaccination

- The preventative flu vaccination reduces your risk of contracting the flu, and ensures that you will only experience mild symptoms even if it is contracted. The flu vaccine is said to be particularly effective for the elderly and for those with underlying conditions who have a high risk of developing serious complications. If you are over the age of 65, the vaccination can be subsidized by your local municipality. For details, please contact your municipality of residence.

Issued by **Gifu International Center (GIC)**

Gifu Chunichi Building 2F, 1-12 Yanagase Dori, Gifu City, 500-8875
Tel: 058-214-7700 Fax: 058-263-8067
Triophone: 058-263-8066 (Three-way telephone service for civic interpreting)
E-mail: gic@gic.or.jp URL: <http://www.gic.or.jp>
Opening hours: Sunday to Friday 9:30 – 18:00
Closed: Saturday, Public Holidays, New Year Period
Languages: English, Chinese, Portuguese, Tagalog

Date of
Publication

November 1, 2018
(Published three times yearly in July, November, and February)

