

Gifu International Center (GIC)
International Exchange &
Multiculturalism Information Magazine

English



Creating an Environment where Foreign Residents can lead Safe and Worry-free Lives

—Helping foreign children to lead fulfilling school lives— —Training for Japanese Instructors of Foreign Children—

As the number of foreign residents gaining permanent residence in Japan is increasing, so is the number of foreign children needing Japanese language help. There are not enough Japanese instructors and people to help these children as they start school, and the local districts which are able to provide support to children are limited.

In order to increase the number of people in local communities who can provide Japanese language support, GIC held 4 training sessions for Japanese instructors of foreign children between June and September in Gifu, Minokamo, and Kani. The sessions were aimed at volunteers who teach at local Japanese language classes, and there were 64 participants in total.



Training Lecture

—Helping foreign residents to have worry-free medical consultations— —2017 Training for Volunteer Medical Interpreters—

GIC coordinates volunteer medical interpreters (Portuguese, Chinese and Tagalog) for medical institutions within the prefecture so that foreign residents who lack confidence in Japanese can have worry-free medical consultations. In order to improve the skills of our current medical interpreters, as well as find and train new interpreters, we held training for volunteer medical interpreters on 18th and 19th November. The first day was made up of seminars about the Japanese health care system, the mindset of a medical interpreter, basic medical knowledge, and interpreting skills. The second day focused on practical training and role-playing using medical dummies. A total of 60 people participated in the training sessions.



Practical Training

—Volunteer Training Workshop to Support Foreign Residents in a Disaster and Disaster Prevention Workshop for Foreign Residents—

There are around 48,000 foreigners living in Gifu Prefecture at present. In the event of a large-scale disaster such as a large earthquake, those who do not understand much Japanese will need support. On 12th November, we held a Volunteer Training Workshop to Support Foreign Residents in a Disaster and a Disaster Prevention Workshop for Foreign Residents at Wakakusa Plaza, Seki General Welfare Hall. (Details will be posted in the next issue)



Disaster Prevention Workshop for Foreign Residents



Do You Know About Gifu International Takumi Academy?

—There is a school in Minokamo where you can gain the skills and qualifications necessary to work in the manufacturing and construction industries as a regular employee—

The manufacturing industry is thriving in Gifu. Aside from manufacturing large machinery and metal molds used in cars and factories, there are many companies manufacturing the materials used in our everyday lives, as well as in various industries, such as plastics, metals for knives and bolts, ceramics, paper, furniture, wood, textiles, and clothes. Moreover, construction work such as building houses and office buildings, roads and bridges also come under the umbrella of manufacturing. The sites where such work takes place are at the forefront of the manufacturing industry, and are sustained by engineers with specialist knowledge and skills.

Gifu International Takumi Academy is a prefectural vocational skills development institution where students can gain specialist knowledge and skills to work towards the necessary qualifications to become a regular employee in the manufacturing or construction industry.

In class, students deepen their understanding of what they have learnt from the textbook through practical training, using the same tools and machinery as in a real workplace. Nearly 100% of students find employment after graduating from Takumi Academy. Many find employment within the prefecture, and some commute to work from home. Some courses are free, and those which cost money are very affordable compared to universities or vocational schools.

International Takumi Academy is divided into 2 schools, the Vocational Skills Development School and the Vocational Skills Development Junior College, and students can attend for 1 year or 2 years. There are 5 courses, as listed below. Students can enroll after passing an entrance exam.



International Takumi Academy Vocational Skills Development School



① Automotive Engineering Course

(length: 2 years, capacity: 20 students, fee (annual): 59,400 yen)

Students taking this course will learn the knowledge and skills necessary to gain a level 2 car mechanic qualification, and aim to become car mechanics able to maintain vehicles such as hybrid cars with the latest technologies.



② Utility Systems Course

(length: 1 year, capacity: 10 students, fee: free of charge)

Students taking this course will learn about the work of piping and wiring for plumbing, gas, and electricity utilities, as well as the installation of sanitation equipment (hot water supply, wash basins, toilets, unit baths, etc.) and air conditioners, with the aim of becoming utilities technicians. After graduating, students can be employed by a residential utilities construction company (plumbing/gas/air conditioning/electricity).



③ Residential Construction Course

(length: 1 year, capacity: 10 students, fee: free of charge)

Students taking this course will aim to become carpenters building wooden houses. After graduating, they will be employed by a carpentry construction company.



International Takumi Academy Vocational Skills Development Junior College



④ Production Engineering Course

(length: 2 years, capacity: 20 students, fee (annual): 237,600 yen)

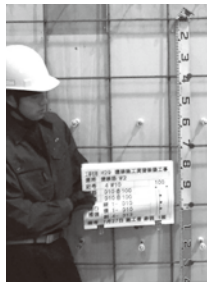
Students taking this course will learn the knowledge and skills necessary for a practical engineer, experiencing the entire manufacturing process through practical training about component design drafting, CAD, using machinery for metalworking and assembling, measuring and controlling components.



⑤ Architecture Course

(length: 2 years, capacity: 20 students, fee (annual): 237,600 yen)

Students taking this course will learn the knowledge and skills necessary to be a leader on a construction site, studying about the entire architectural process from design to construction, and gain a level 2 architect qualification. Several girls take this course every year.



Anyone who has graduated from senior high school or obtained the Certificate for Students Achieving the Proficiency Level of Upper Secondary School Graduates can take the enrollment exam for courses ①, ④ and ⑤. Anyone above 15 years of age can take the enrollment exam for courses ② and ③. The exam involves an aptitude test and an interview. There are no examination or entrance fees. From April, there will be staff in classes for Japanese language support. The classes are small, made up of between 10 and 20 students, so you can ask the teacher about anything you don't understand straight away. Students receive thorough and personal support in a way that stretches each individual's ability. If you would like to gain the skills necessary to obtain stable work in the manufacturing or construction industries as a regular employee, please pay International Takumi Academy a visit.

Please make use of GIC's triophone to call Takumi Academy!

→Please see the final page for more information about the triophone.

Gifu International Takumi Academy Vocational Skills Development Junior College / Vocational Skills Development School

Address: Minokamo-shi, Hachiya-cho, Kamihachiya 3545-3

TEL : 0574-25-2423

FAX : 0574-25-2489

Website : <http://www.takumi.ac.jp/>





Make sure you know about Income Tax Returns

This article is written based on the information available on the National Tax Administration Agency's website. We have summarized the information to make it easy to understand, but please check the website (<http://www.nta.go.jp/tetsuzuki/shinkoku/shotoku/tokushu/h29junbi/index.htm>) for details such as whether you meet the relevant requirements.

Income tax returns refer to the procedures to calculate your income from January 1st to December 31st against the tax rate in order to adjust the amount deducted from your salary.

If your payslip has the words "income tax" (所得税) on it, your employer will perform a year-end tax adjustment every year at the end of November, since tax is deducted from your income at source. Because of this, in many cases it is not necessary to file an income tax return. However, there are some exceptions, as follows.

You must file an income tax return if...

- Your income tax is not deducted from your salary at source
- Your annual income exceed 20,000,000 yen
- You receive more than one salary, and your income which has not undergone a year-end tax adjustment exceeds 200,000 yen
- Your income through a side business or job exceeds 200,000 yen

Additionally, in the following situations, by filing an income tax return, you may receive a refund for overpaid income taxes. However, if your income tax is Qyen, you will not receive a refund even if you file an income tax return.

You may be eligible for an income tax refund if...

- You resigned from your job in the middle of the year
- You have had high medical expenses (over 100,000 yen or so)
- You made a certain kind of donation (hometown tax, etc.)
- You purchased your house by getting a mortgage
- You have dependent family members living outside Japan (applies to those born before 1st January 2002)

* In order to claim tax deduction for a spouse or other dependent family members, you must submit documents proving the family relationship and records of money transfer.

Documents needed for filing an income tax return

- Income tax return form
- Withholding tax statement (original). If you have multiple statements, they must all be submitted.
- Receipts for medical expenses (if applying for a deduction)
- Receipts for donations (if applying for a deduction)

• Documents relating to housing purchases (if applying for a deduction)

• Documents related to dependent family members (if applying for a deduction)

① Documents proving family relationship: documents which prove that you are related to the family member living abroad

② Records of money transfer documents which prove that you have paid for living expenses of the family member living abroad.

If any of these documents are written in a non-Japanese language, you must also prepare Japanese translation(s).

However, income tax returns have extremely detailed requirements which may not fall into the categories listed above.

For details, please contact your nearest tax office as listed below.

Tax Office	Address	Telephone Number	For the Following Areas	Tax Office	Address	Telephone Number	For the Following Areas
Ogaki	Ogaki-shi, Marunouchi 2-30	0584-78-4101	Ogaki-shi, Kaizu-shi, Yoro-gun, Fuwa-gun, Anpachi-gun, Ibi-gun	Seki	Seki-shi, Kawama-cho 2	0575-22-2233	Seki-shi, Mino-shi, Gujo-shi, Kamo-gun, Minokamo-shi
Gifu-kita	Gifu-shi, Sengoku-cho 1-4	058-262-6131	Districts within Gifu-shi to the north of the JR Tokai Takayama line or to the west of JR Tokai Gifu Station, Yamagata-shi, Mizuho-shi, Motosu-shi, Motosu-gun	Takayama	Takayama-shi, Nada-machi 3-82	0577-32-1020	Takayama-shi, Hida-shi, Gero-shi, Ono-gun
				Tajimi	Tajimi-shi, Hakusan-cho 1-29-1	0572-22-0101	Tajimi-shi, Mizunami-shi, Toki-shi, Kani-shi, Kani-gun
Gifu-minami	Gifu-shi, Kanoshimizu-cho 4-22-2	058-271-7111	Parts of Gifu-shi, Hashima-shi, Kakamigahara-shi, Hashima-gun	Nakatsugawa	Nakatsugawa-shi, Kayanoki-cho 4-3	0573-66-1202	Nakatsugawa-shi, Ena-shi

Preparing for Enrollment in Elementary School



In just 2 more months, it will be the beginning of a new school year, and many children will be starting school for the first time. We have gathered together information for non-Japanese mothers living in Gifu, who doubtless have various concerns as their children prepare to enroll in elementary school.

Notices about elementary school enrollment will be sent to you by your local municipal office or school. If you do not receive these notices, or are unclear about anything, please contact your Board of Education.

Notice of Enrollment Letter

Between December and February, you will receive a "Notice of Enrollment Letter" from your local municipal office. The main information in this letter is the names of parents/guardians, the name of the child enrolling, their birthday, enrollment date, the school they are enrolling at, and the date of the entrance ceremony. Please check that there are no mistakes such as your child's name. You will need this letter on the day of the entrance ceremony, so make sure you do not lose it.

Enrollment Information Session

During January or February, schools hold an "Enrollment Information Session", which they will send you details about. The session covers school rules, required school supplies, the entrance ceremony, what children should be able to do before starting school (greetings, using the toilet, changing clothes, etc.). Often, this session will be held for 3 to 4 hours from noon until the evening.

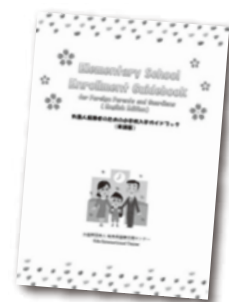
As many parents are likely particularly worried about what school supplies to prepare, we have listed the basic necessary items below. In some cases, these must be the kind specified by your school (gym clothes, indoor shoes, etc.), so make sure you check at your enrollment information session.

Items to prepare before starting school

School backpack, hat for the school commute, umbrella, raincoat, handkerchief, tissues, tote bag, indoor shoes, indoor shoes bag, pencil case, stationery, writing pad, chopsticks, canteen/thermos, lunch napkin, lunch bag

GIC has produced an "Elementary School Enrollment Guidebook for Foreign Parents and Guardians (Japanese, English, Chinese, Tagalog, Portuguese)" containing the information above. The guidebook is available for download on our website, so please make use of it.

URL: <http://www.gic.or.jp/upload/docs/e-guidebook-with-numbers0327.pdf>



Farewell Message from CIR Wu

Before I came to Gifu, all I knew about this prefecture was that it was one of Japan's few landlocked prefectures, and that it was close to Nagoya.

However, now that my time here is coming to an end, I realize that Gifu has become like a second home to me, and I am sad to have to say goodbye to all the people I've met here.

During my 2 years at Gifu International Center, I had the opportunity to introduce all of you to Chinese culture, food, and games through language classes, multicultural salons, and school visits. Whenever I see everyone's understanding and satisfied faces at these activities, I'm filled with happiness as well. Seeing the warm interactions between Chinese exchange students and Japanese students of Chinese

at a gathering I held after my Chinese language classes, I was reminded of Zhou Enlai's words: "Japan-China Friendship is ultimately about friendship between the people of both countries." Of course, governments need to make an effort to establish friendly relations between the two countries, but I have experienced anew that the basis of this friendship is the interaction between individual people.

On my days off, I visited Gifu Park filled with cherry blossom, Tanigumi covered in autumn leaves, the snowy houses and natural landscape of Shirakawa-go, saw the magnificent fireworks over the Nagara River, enjoyed foods such as sweetfish, kei-chan and persimmon, and saw cultural heritages that have been passed down over many generations, such as the traditions of the Takayama festival and Mino Washi.

My work as a Coordinator for International Relations may be coming an end, but I have not finished working towards China-Japan friendship. When I return to China, I will do my very best as a Japanese language teacher to communicate to my students all I have seen and felt and learnt during my time in Gifu, so that friendship between these two countries may continue to grow.

I won't say "goodbye", but "see you later!" I will come and see you all again someday. You are all welcome to visit my hometown of Jiangxi province, Gifu's sister province, any time!



Information

In this corner, we share announcements from GIC and information on international and multicultural groups' events or courses happening within the prefecture.

Telephone Consultations and Administrative Interpreting Services for Foreign Residents

GIC provides a lifestyle consulting service for foreign residents in English, Portuguese, Chinese, and Tagalog. Additionally, we have a triophone system in place which allows one of our consultants to interpret between a foreign resident and prefectural or local administration offices or other public institutions.

* Interpretation is free (however, the caller is responsible for call charges.) Please do not hesitate to use this service.



3 people can talk on the phone at the same time (triophone)

English, Portuguese, Chinese and Tagalog

Monday to Friday, 9:30 to 16:30

● Consultation TEL: 058-214-7700

● Triophone TEL: 058-263-8066

Our Facebook Page is now Multilingual!

We put out information about events and so on for foreign residents, so please give us a "like" or "share".

You can access our page in Japanese, English, Chinese, Portuguese or Tagalog via this QR code.



Japanese/English/Chinese/Portuguese/Tagalog

We are producing a Life Plan Guidebook for Foreign Parents and Guardians!

We are producing a guidebook to support foreign residents in their long-term life planning. Our Life Plan Guidebook covers education, employment, social insurance and so on in Japan.

It is full of information about Japan's education system and costs, and about public social insurance programs such as pensions, medical insurance, and long-term care insurance, which are important to know about if you are planning to reside in Japan permanently.

We will soon be uploading the Japanese, Portuguese and Tagalog versions of this guidebook to our website in turn.

Issued by:

Gifu International Center (GIC)



Gifu Chunichi Building 2F,
1-12 Yanagase Dori, Gifu City, 500-8875

Tel: 058-214-7700 Fax: 058-263-8067

Triophone: 058-263-8066 (Three-way telephone service for civic interpreting)

E-mail: gic@gic.or.jp URL: <http://www.gic.or.jp>

Opening hours: Sunday to Friday 9:30am – 6:00pm

Closed: Saturday, Public Holidays, New Year Period

Languages: English, Chinese, Tagalog, Portuguese

February 1, 2018

(Published three times yearly in July, November, and February)

Date of Publication:

