

Gifu International Center (GIC)

International Exchange &
Multiculturalism Information Magazine

English



©岐阜県 清流の国ぎふ ミサト #0195

Creating a Global Environment at a Local Level

Multicultural Salon Introducing Other Cultures

GIC provides information and opportunities which help Japanese and foreign residents of Gifu Prefecture understand each other's cultural backgrounds and appreciate different ways of thinking. Various projects and events facilitate this, such as the publication of this magazine, "Sekai Wa Hitotsu", and the international exchange event "Hello Gifu, Hello World", as well as language classes and cultural salons held by Coordinators for International Relations. Through these and other activities, GIC endeavors to create a global environment at a local level.

On July 25th, as many children were just beginning their summer holidays, GIC held a cultural salon at Gifu Seiryu Cultural Plaza (Gakuen-cho, Gifu-shi) called "Let's Enjoy an International Summer!"

CIRs from Brazil, China and the United States organized a fun program with quizzes and games to help middle and upper grade elementary schoolchildren from Gifu Prefecture find out more about other cultures.

This was the first time GIC has held such an event. As well as learning about other countries through fun and games, the children were able to think about the similarities and differences between Japan and other countries, and experience that there are people who think differently from themselves.



How much do you know about the USA, China, and Brazil?

The CIRs introduced and compared their own countries to Japan, quizzing the children on facts such as country size, population, World Heritage Sites, plants and animals, seasons, natural environments, history, lifestyles, and school life.



Other Activities

Participants also tried their hands at Rock, Paper, Scissors, and making up dialogues for manga.



Greetings from Our New Coordinator for International Relations



Hello everyone! My name is Kathryn Orr, and I have been working at GIC as a Coordinator for International Relations since August. My parents are both British, but as they were working in Japan, I was born in Hokkaido and lived in Japan for most of my childhood. I moved to Northern Ireland when I was 16, and got to know British culture more over the following 6 years. After graduating from university in June of this year, my life in Japan has begun once more. Although I have many years' experience of living in Japan, it is my first time to come to Gifu, and also my first time to be here as a working adult. There are many similarities between the UK and Japan: for example, both are island nations and have constitutional monarchies. However, there are also many cultural differences. Through my work as a CIR, I hope to be able to share something of British culture and history with everyone here, while also learning lots about Gifu. I will do my very best to contribute what I can and look forward to meeting all of you!

About the UK



Official name: United Kingdom of Great Britain and Northern Ireland
(Made up of the 4 countries of England, Wales, Scotland and Northern Ireland)

Official language: English **Capital city:** London **Population:** around 65.51 million (roughly half of Japan)

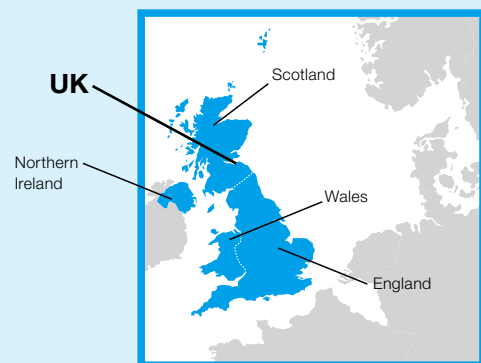
Area: 244,820 km² **Currency:** Pound sterling **GDP:** 2.619 trillion US dollars



UK Fun facts



- Over 300 languages are spoken in the UK
- Every day, the British drink a total of 165 million cups of tea
- In the summer, it is light until after 10pm, and in the winter dark until 9am
- Because the weather is unpredictable, people rarely use umbrellas when it rains
- The UK has the world's shortest flight which takes only 2 minutes
- Opened in 1863, the London underground is the world's oldest metro system
- London has more Indian restaurants than Mumbai
- On their 100th birthday, British people get a personalized letter from the Queen



The North of the "Emerald Isle" of Ireland



The Giant's Causeway

Before moving to Gifu, I was living in Northern Ireland, a part of the UK which makes up only 3% of the country's population. Although Northern Ireland shares a border with the Republic of Ireland to the south and west, when Ireland was partitioned in 1921, the North remained a part of the UK. As a result, Northern Ireland has a unique mixture of British and Irish culture. My family live by a small village near the capital city of Belfast. Our next-door neighbors are farmers who farm potatoes, barley, cows and sheep. The neighbors' children love farming, and the eldest has been driving a tractor around helping his dad since he started secondary school.

As Northern Ireland is a small place, it's said that if two people from Northern Ireland meet, they will inevitably discover a mutual friend or relative. I myself have had the experience of running into a Northern Irish person on the street in Tokyo, and finding that we had a mutual acquaintance.

Over the last few years, Northern Ireland's beautiful natural landscape has been attracting increasing numbers of tourists. It's quite a distance from Japan, but if you ever get the chance, please make a trip to Northern Ireland!



The view from my house in N. Ireland



School life in N. Ireland

Lifestyle Information for Foreign Residents



At GIC, we provide lifestyle information to assist foreign residents of Gifu Prefecture, such as information about the Center's events, administrative information, and guidebooks regarding various aspects of daily life. In particular, important information from the Prefecture or local municipalities designed to help residents lead safe and worry-free daily lives is uploaded to our website in four languages (English, Chinese, Tagalog and Portuguese), and also provided over the phone via our triophone service.*

Recently, GIC has also set up Facebook pages in each of these languages, and made a Daycare/Childcare Services Support Book available for parents and guardians of young children who have not yet started elementary school.

* For more information about the triophone, please see page 4.

Our Facebook Page is now Multilingual!

In addition to our Japanese Facebook page, we now have Facebook pages in English, Chinese, Tagalog and Portuguese, where we upload information about events and so on.

[Japanese] 岐阜県国際交流センター

[English] Gifu International Center

[Chinese] 岐阜县国际交流中心

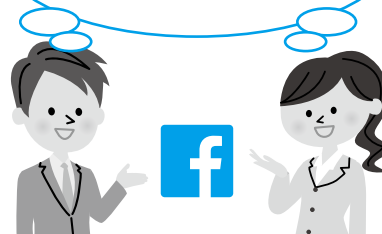
[Tagalog] Public Utility Organization Gifu

[Portuguese] Centro Internacional de Gifu



Search

We want the information to reach as many people as possible, so please "like" and "share"!



"Daycare/Childcare Services Support Book for Foreign Parents & Guardians" Now Available!

GIC has made a support book in order to assist foreign parents and guardians who wish to make use of daycare and childcare services. The support book provides an overview of the different types of daycare facilities available, the services they provide, application procedures, and the relevant municipal offices which handle daycare-related enquiries.

Download the support book from GIC's homepage: <http://www.gic.or.jp/2017/08/post-72.html>

You may find the support book useful in the following situations:

- You would like your young children to be cared for while you are working, but you do not know where such childcare services are available.
- You are unsure of the application procedures for childcare services.
- You do not know who to consult about childcare services.
- Your Japanese is limited, and you are unable to understand an explanation about childcare services given at your local relevant municipal office.



* Specific application details will vary slightly by municipality. Please check with your municipality of residence for precise information.

We translate "Announcements from Gifu Prefecture" into 4 Languages!

Once a month, we translate Announcements from Gifu Prefecture into 4 languages (English, Chinese, Tagalog and Portuguese) and upload them to the Prefecture's homepage.

The announcements provide a variety of information about events, performances, seminars and so on taking place throughout Gifu Prefecture.



Search

Website: http://www.pref.gifu.lg.jp/kensei/koho-kocho/kohoshi/11103/index_2733.html

We will continue to make sure that foreign residents receive the information they need through various channels, so please make use of Gifu International Center!

Information

Learn the Basics of Medical Interpreting!

2017 Training for Volunteer Medical Interpreters

GIC is running a training course for medical interpreters so that residents who lack confidence in Japanese can have worry-free medical consultations. The course will cover the basics, so all those interested in medical interpreting, including first-timers, are very welcome!



When: 10:00 – 17:00, 18th November (Sat.) & 19th November (Sun.), 2017

Where: 18th November: Kani Public Arts Center ALA (3433-139, Shimoedo, Kani-shi)
19th November: Gifu University School of Medicine (1-1 Yanagido, Gifu-shi)

Who: registered Gifu Prefecture volunteer medical interpreters and those interested in becoming volunteers.

* Non-Japanese participants must have a conversational level of Japanese. Japanese participants must have a conversational level of the target language.

Target languages: Portuguese, Chinese, Tagalog

Participant capacity: 50 people **Fee:** free of charge

Course content: * the course will be held in Japanese.

18th: the Japanese health care system, the mindset of a medical interpreter, basic medical knowledge and interpreting skills

19th: practical training and role-playing using medical dummies

* Participants who attend on both days will receive a certificate of participation.

Applications/Enquiries: Gifu International Center (TEL: 058-214-7700)

Participants will be eligible to take the Gifu Prefecture Volunteer Medical Interpreters Registration Exam.



Telephone Consultations and Administrative Interpreting Services for Foreign Residents

GIC provides a lifestyle consulting service for foreign residents in English, Portuguese, Chinese, and Tagalog. Additionally, we have a triophone system in place which allows one of our consultants to interpret between a foreign resident and prefectural or local administration offices or other public institutions.

* Interpretation is free (however, the caller is responsible for call charges.)

Please do not hesitate to use this service.

English, Portuguese, Chinese and Tagalog

Monday to Friday, 9:30 to 16:30

Consultation TEL: 058-214-7700

Triophone TEL: 058-263-8066



Eyecity Contact Lenses



New customers: **20-25% off** regular store prices (tax-exclusive) for your first purchase when you register online

※Discount rates may vary over time

※This discount cannot be combined with any other offers

Gifu Store (Colorful Town Gifu 1F)

TEL: 058-388-8483

Ogaki Store (JR Ogaki station front)

TEL: 0584-77-0555

Kakamigahara Store

(Aeon Mall Kakamigahara 1F)

TEL: 058-375-3120

Check here for details!



Issued by:

Gifu International Center (GIC)

Gifu Chunichi Building 2F,
1-12 Yanagase Dori, Gifu City, 500-8875

Tel: 058-214-7700 Fax: 058-263-8067

Triophone: 058-263-8066 (Three-way telephone service for civic interpreting)

E-mail: gic@gic.or.jp URL: <http://www.gic.or.jp>

Opening hours: Sunday to Friday 9:30am – 6:00pm

Closed: Saturday, Public Holidays, New Year Period

Languages: English, Chinese, Tagalog, Portuguese

Date of Publication:

November 1, 2017

(Published three times yearly in July, November, and February)

