

Sekai wa Hitotsu

Autumn 2013 English No. 128



GIC and the Gifu International Association cohosted the international exchange event 'Hello Gifu Hello World' on Sun 14 July in Cinex Hall and on the Waku Waku stage in front of Takashimaya department store. There were songs and dances from different countries, cultural introductions, and traditional clothing to try on. Residents of Gifu Prefecture were able to enjoy experiencing other cultures, and learning more about international exchange and intercultural understanding.

Hello Gifu Hello World 2013

Read more on p3!



Use our 'International Salon' public space! P2

GIC Projects P3

Upcoming GIC Projects and Events ... P4~5

- Gifu Brazil Exchange Week
- Working Holiday Seminar 2013
- Medical Interpreting Supporter Course 2013

- Multilingual Radio Broadcast Waiwai Saisai Oshaberimura
- End of Year International Party

Introduction: Prefecturally Funded Exchange Student P5

- Marcelo Tomoaki Yoshimura

World Culture Introduction ... P5

- Chinese New Year

Information for Foreign Residents ... P6

- Consultation Services in Multiple Languages
- Administrative Procedure Specialist Consultation

Groups Active in Gifu Prefecture ... P7

- Fureai Japanese Class

JICA Corner

A Taste of Autumn P8
Message from GIC

Use our 'International Salon' public space!

At Gifu International Center, we have a public space called the 'International Salon' for the purposes of increasing international understanding among prefectural residents, encouraging international exchange and multiculturalism among prefectural residents, and supporting non-Japanese prefectural residents. This is a place where people of different nationalities can mix, a place for providing information, and a place where people can ask the staff questions.

● Lending the international salon and international flags ●



Our international salon is available for loan for multicultural or international exchange activities conducted on a nonprofit basis. The salon shares the same space as the office, and can seat 20 people. The salon can be used for meetings, workshops, study sessions or other events related to multiculturalism or international exchange.

We also lend out national flags and desktop flags for free to nonprofit organisations for use in international exchange projects.

As a rule, we only make loans to people who can come to the GIC in person to receive or return the items lent.

● Library corner ●

International resources including periodicals, dictionaries, magazines, and Japanese textbooks are available to browse in the salon. Use them for language study!

We have issues of The Japan Times (English), English Journal (English), Super Interessante (Portuguese), Kiku (Chinese), and more.



● Foreign language courses and international understanding events ●



Our Coordinators for International Relations (CIRs) and language volunteers teach English, Portuguese and Chinese. They also hold cultural events.

Check our homepage for current event information.



We will teach you about the language and culture of our home countries!

Feel free to drop by if you have any questions about daily life, or if you have any problems!



● Consultation Corner ●

Staff members are available to answer questions from international residents relating to everyday life, or from prefectural residents regarding international exchange or cooperation. English, Portuguese, Chinese and Tagalog consultation available.

● Bulletin Board ●

We have a bulletin board in the Active G open space, adjoined to the west of JR Gifu station on the 3rd floor in the Art Living area. It is a place for information dissemination and exchange. Notices will be posted for up to 2 months, and can be up to A4 size.



25 Years - Hello Gifu Hello World 2013

This year 3000 prefectural residents, including our international residents, attended the 25th Hello Gifu Hello World, on Sunday 14 July at Cinex Hall and the Waku Waku stage outside of Takashimaya department store.

As an introduction to Japanese culture, the Gifu High School Music Club started the day with a choir performance, GIC's CIR Mr Morishita gave a Japanese dance performance, and there was also a Koto performance. Performances from various countries like the Flamenco and Belly Dance made the people passing by stop and enjoy the show.

At the Nodo Jiman International singing contest, 14 groups made up of a total of 25 people representing 11 different countries performed songs from their home countries or Japan. There were people wearing ethnic clothing from their own countries or Japan, which really made the stage come alive.



Nodo Jiman International Singing Contest

In Cinex Hall, 26 different groups active within the prefecture from Asia, Europe and other areas operated booths introducing the culture of the countries they represent and the types of activities they do. There were also ethnic arts and crafts for sale and samples of ethnic cooking to try. Participants tried on traditional clothing like Saris and Chima Jeogori and had their photos printed on postcards and calendars, or had their names printed in foreign languages on name cards. This was a fun way to experience other cultures, and very popular among the participants.

Japanese and international residents were able to mix through a variety of activities, and everybody was able to enjoy different cultures, and increase their international understanding.



▲Japanese dance performance



▲Booth area

Hosted by Gifu International Association and Gifu International Center (GIC)

Upcoming GIC Projects and Events

Gifu Brazil Exchange Week

Did you know that this year marks the 100th anniversary since Gifu Prefectural residents first immigrated to Brazil? The following event is part of the commemoration project for 100 years of Gifu Prefectural residents immigrating to Brazil. We would be delighted to see you there.

① **Brazil and Gifu Panel Display**
This panel display introduces the history of the connection between Gifu and Brazil, as well as various exchange events.

When: Tues 19 to Fri 29 November 2013, 9am – 9:30 pm

Where: Fureai Fukuju Kaikan 2F, Indoor event plaza 'The Atrium'

② **Brazilian Music Concert**

A concert of Brazilian music performed by Brazilian people living in the prefecture!

When: Tues 19 and Tues 26 November 2013, 12:20 – 12:50

Where: Fureai Fukuju Kaikan 2F, Indoor event plaza 'The Atrium'

③ **Lecture introducing local pioneers**

Introducing the achievements of pioneers who left their mark during pre-war immigration history, including Hachisaburo Hirao and others.

When: Weds 20 November 2013, 1:30 – 4:00 pm, Doors Open 1:00 pm

Where: Fureai Fukuju Kaikan 14F, 'Tenbou' Reception Room



Working Holiday Seminar 2013

Last year we got a great response from people who participated in our Working Holiday Seminar, and this year we are holding the same event again.

So if you want to work overseas, not sure what direction to take your life in, or just not sure what a working holiday visa is, please come along!

● **When:** Sun 10 November 2013, 2 – 4 pm

● **Where:** Ichihashi Community Center, 6-13-25 Ichihashi, Gifu City

● **Cost:** Free

● **Capacity:** 30 people

● **Application deadline:** Fri 8 November

● **Presenter:** Shu Ikeguchi, Executive Director, Japan Association for Working Holiday Makers



Medical Interpreting Supporter Course 2013

● **When:** Sun 1 December 2013, 10 am – 5 pm

● **Where:** Gifu University School of Medicine, Kyoiku Fukuri-tou, (Education Fukuri Wing) 4F, 1-1 Yanagido, Gifu City

● **Cost:** Free

● **Capacity:** 50 people

● **Applicants:** Foreign residents who can speak conversational Japanese, or Japanese people with an interest in medical interpreting.

● **Application deadline:** Fri 22 November



※The above 2 events are correct at time of publication, but may be subject to change. For further details please refer to GIC's home page.

Multilingual Radio Show Waiwai Saisai Oshaberimura



A programme with a strong international flavor featuring native speakers from 5 different countries. (Languages: English, Chinese, Portuguese, Tagalog and simple Japanese.)

Japanese listeners can learn about the wonders of multiculturalism through conversation between hosts, which is mixed with information for foreign residents for example about everyday life or emergency situation protocol, while enjoying music. GIC staff appearances also planned!

Broadcasting Station: Gifu Chan 1431 KHz (Gifu Broadcasting System, AM Broadcast 1431 KHz)

Broadcast Date: First Sunday of every month 9:00 – 9:15 pm

Broadcast Period: July 2013 – February 2014

For further details please check the programme homepage, Facebook, or Twitter!



End of Year International Party

Last year's performance

GIC CIRs Sally (Australia), Morishita (Brazil), and Chen (China) are putting on an end of year party to give Japanese and non-Japanese people living in Gifu Prefecture a chance to spend time together. Enjoy an international performance and a quiz. We look forwards to seeing you there!

● **When:** Sun 15 December, 2 – 5 pm

● **Where:** Yanagase Cinex Hall, Gifu City (2-20 Hinode Machi, Gifu City)

● **Cost:** Free

● **To Bring:** One item of food that you can eat standing up, or something to drink

● **Application:** Please refer to the GIC home page

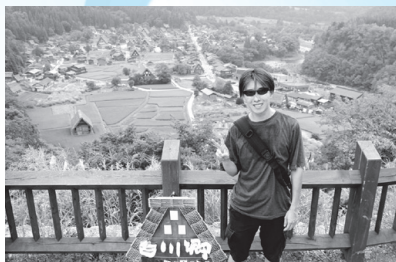


Introducing: 2013 Prefecturally Funded Exchange Student



The prefecturally funded exchange student system is for ancestors of people from Gifu Prefecture who immigrated to Brazil, and was founded in 1969. Marking 100 years since Gifu prefectural residents first immigrated to Brazil, and 75 years since the formation of the Association of People from Gifu Prefecture in Brazil, 2013 has seen Marcelo Tomoaki Yoshimura (30 years old, Sao Paulo) become the new prefectural exchange student.

Yoshimura initially found work after graduating from Sao Paulo University with a degree in mechanical engineering, but felt that he needed to learn more about logistics in relation to the manufacturing industry. He learnt that research was being carried



Shirakawa-go Gassho-zukuri Villiage (August 2013)

out at Gifu University,

and decided to apply for prefectural funding.

He says that it's only been 6 months since he has arrived in Gifu, but he hasn't experienced any difficulties. He expressed admiration at how polite Japanese people are, how safe Gifu Prefecture is, and how convenient shopping and public transport facilities are.

He spoke enthusiastically about how after finishing the scholarship, he would like to work in the automisation industry in Japan and Brazil, and to turn his practical studies into real expreince.



In front of the Kobe Center for Overseas Immigration and Cultural Interaction (April 2013)

Courtesy of Chinese CIR Chen Ping:



World Culture Introduction: Chinese New Year



In Japan there is a custom where people look up at the sky and enjoy the mid-autumn moon while eating *Tsukimi Dango* (moon-viewing dumplings). The origin of this custom can actually be found in the traditional Chinese mid-autumn celebration. Let me explain.

Every year on 15 August according to the old calendar (19 September according to the new calendar) there is a traditional festival called the mid-autumn festival (仲秋節). This marks the passing of the first half of the year. According to the calendar, one year is divided into four seasons, and each season is divided into three parts called *meng* (孟), *zhong* (仲) and *ji* (季), so the mid-autumn festival is sometimes also written as 仲秋節. The moon on 15 August is the roundest, brightest, and most beautiful moon that you will see all year. If you look up at the night sky, you will remember times you spent enjoying the company of your family. That's why this is also known as the festival of the happy home (團樂節).

In China, the mid-autumn festival is not complete

without mooncakes.

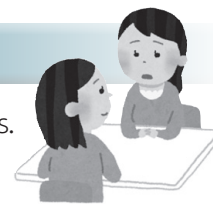
To this day, the custom of watching the moon while eating mooncakes on the night of the mid-autumn festival remains. On this night people drink, watch performances, celebrate, and pray for the health of family members that are in other places.

I spent the mid-autumn festival by myself this year, looking up at the full moon from my veranda, thinking about my beloved family who were so far away.



Information for Foreign Residents

Consultation services in multiple languages



There are many different places in Gifu Prefecture that offer consultation in foreign languages. Are you having problems with work, lifestyle, visas, or anything else? Then by all means, make use of these services.

Vehicle Tax

Body Name	Language	Day	Time	Address/ Telephone Number
Gifu Vehicle Tax Office	Portuguese	Mon (Until Aug)	9:30 - 16:30	2648-3 Hikie, Gifu City 058-279-3781

Public Housing

Body Name	Language	Day	Time	Address/ Telephone Number
Gifu Prefectural Housing Corporation	Portuguese	Thurs	10:00 - 17:00	Workshop 24, 6F, 6-52-18 Imajuku, Ogaki City 0584-81-8503

Women's Issues Consultation

Body Name	Language	Day	Time	Address/ Telephone Number
Gifu Prefecture Women's Consultation Center	Tagalog, English	Mon - Fri	By appointment	Gifu Prefecture Social Welfare and Agricultural Kaikan 2F, 2-2-1 Shimonara, Gifu City 058-274-7377

Work Consultation

Body Name	Language	Day	Time	Address/ Telephone Number
Hello Work Gifu Gaikokujin Corner	Portuguese	Mon - Fri	9:00 - 16:00	1-9-1 Gotsubo, Gifu City 058-206-5063
	Chinese	Mon - Fri	9:00 - 16:00	
	English	Tues, Weds, Thurs	10:00 - 17:00	
Hello Work Ogaki Gaikokujin Corner	Portuguese, Spanish	Mon - Fri	9:00 - 17:00	1-1-8 Fujie-cho, Ogaki City 0584-73-9294
	Chinese	Mon, Tues, Thurs, Fri	9:00 - 16:00	
Hello Work Tajimi Gaikokujin Employment Service Corner	Portuguese, Tagalog	Mon - Fri	10:00 - 17:00	5-39-1 Otowa-cho, Tajimi City 0572-22-3384
Hello Work Seki Gaikokujin Employment Service Corner	Portuguese	Mon - Fri	10:00 - 16:00	4-6-10 Nishi Hongo Dori, Seki City 0575-22-3223
Hello Work Minokamo Gaikokujin Employment Service Corner	Portuguese	Mon - Fri	9:00 - 17:00	1-206-9 Fukata-cho, Minokamo City 0574-25-2178
	Tagalog	Mon - Fri	10:00 - 17:00	
Gifu Prefecture Personal Support Center	Portuguese	Mon - Sat	9:00 - 18:00	1-10-1 Hashimoto-cho, Gifu City (Inside JR Gifu Station Active G 2F) 058-269-3757

Life and Work Consultation Corner (In co-operation with Gifu City)

Body Name	Language	Day	Time	Address/ Telephone Number
Ogaki Work Plaza	Portuguese, (Spanish)	Mon - Fri	9:00 - 16:00	Ogaki City Hall 1F, 2-29 Marunouchi, Ogaki City 0584-47-7571
Kani Foreign National One-stop Employment Service Corner	Portuguese, Tagalog, Visayan, (English)	Mon - Fri	10:00 - 17:00	Kani Sogo Kaikan Bunshitsu 1F, 5166-1 Shimoedo, Kani City 0574-60-5585
Minokamo International Exchange Association (by request of Minokamo City)	Portuguese, English, Tagalog	Weds	17:30 - 20:00	Minokamo City Lifelong Learning Center Room 506 3425-1 Ota-cho, Minokamo City 0574-25-4141 Phone number during regular opening hours: 090-9941-3915
		Sat	10:00 - 12:30	

Labour Conditions Consultation

Body Name	Language	Day	Time	Address/ Telephone Number
Gifu Labour Standards Bureau, Labour Standards Department, Inspection Division	Portuguese, Spanish	Tues, Weds, Thurs	9:00 - 16:00	Gifu Godo Chosha 3F, 5-13 Kinryu-cho, Gifu City 058-245-8102

Enquiries Regarding Immigration and Residency Procedures

Body Name	Language	Day	Time	Address/ Telephone Number
Nagoya Regional Immigration Office Foreign Residents Information Center	Chinese, Korean, English, Spanish, Portuguese, French, Tagalog	Mon - Fri (Excluding Public Holidays)	8:30 - 17:15 (Tagalog a.m. only)	5-18 Shoho-cho, Minato-ku, Nagoya City (Inside Nagoya Regional Immigration Bureau) 0570-013904 (IP, PHS, Overseas: 03-5796-7112)

Administrative Procedure Specialist Consultation

GIC also holds *free consultation sessions with an administrative procedure specialist* twice a month. Visas, international marriages, divorce, business licenses, and more- if there is something that is of concern to you, a specialist is here to help. Prior booking required. Please call us on 058-214-7700 to book your appointment, and tell us if you need an interpreter. We can provide language support for English, Portuguese, Chinese, and Tagalog. Consultation sessions are held on the following dates:

	Consultation Dates and Times	Inquiry Examples
Administrative Procedure Specialist Consultation	First Weds every month 1 - 3 pm Third Sun every month 1 - 3 pm	Visas, bringing your family to Japan, naturalisation, international marriage and divorce, business licenses, or other administrative procedures.

Presently we do not have consultation sessions with a lawyer available. If you have a legal problem you need to solve, we will introduce you to the *Houterasu* Japan Legal Support Center.

Fureai Japanese Class



● Outline

Fureai Japanese Classes work on the principal of one on one education, and teachers rich in experience provide Japanese instruction. Beginners to advanced learners are welcome, and instruction is provided based on the needs of the student, whether that be conversation, grammar, reading and writing, or study for the JLPT. Students can learn in accordance with their degree of proficiency.

When: Every Sunday
10:00 – 11:40 am
(closed during Golden Week and Obon Holidays)
Where: GIC (map P8)
Cost: ¥200 per lesson
Parking: Fee based parking available in the area

- Founded 1989
- Represented by Hiroyuki Moriya
- Tel: 090-9023-3541 (Mr Moriya)
- Email: temomoriya@yahoo.co.jp
- About 10 students participate each time, representing China, Korea, The Philippines, Cambodia, Vietnam, Turkey, America, Canada, Iceland, and Russia.

● Student/ Teacher Comments

'I'm trying really hard to pass level 1 of the Nihongo Kentei' (China)

'I've only just arrived in Japan, so at the moment I'm learning Hiragana' (Denmark)

'I've been studying Japanese for a year. Now, I can manage to have conversations with people' (Philippines)

● A message from the Fureai Japanese Class

The Fureai Japanese Class was inaugurated on the occasion of the establishment of the GIC. The classes have a long history, and have nurtured a lot of students. We had one student who started just after they came from China, who after being with us for two years, passed the entrance exams for a prefectural high school with flying colours, and continued into university. We also have many examples of students who passed level 1 of the Nihongo Kentei Japanese test with excellent marks. We also have some destiny on our side, as we also have students that have become couples. We operate under the motto of *Ichi Ki Ichi E*-treasure every encounter because it will never occur again. We value each encounter with our students, and aim to create a classroom that will be a memorable experience. We wish to encourage international residents to attend our classes. Feel free to pop in and see what it's all about!



Event Report

On Fri 16 August the event *Piece- Taking one step closer to our future: now*, was held at the Takayama Shimin Bunka Kaikan (Citizen's culture hall). Students of Gifu University originally from Takayama held a presentation for Junior High School students from Takayama that they prepared for over half a year called *The chance to think about your future for real*. In the morning medical doctor



Dr Kuwayama gave a presentation called *The World Stage*. In the afternoon there were workshops about world knowledge, taught in the form of games, and a round table discussion held by the university students. It felt really good to see the concentration with which the students listened, and the presentation that the university students prepared. Thank you everyone for your participation and your cooperation.

JICA Volunteer Recruitment Drive!
Explanatory meetings at venues across Japan.

Weds 23 October 6:30 pm
Gifu City Fureai Fukuju Kaikan

Talk to Overseas Cooperation Volunteers and Senior Volunteers who have been deployed overseas.

Don't hesitate to come along!
Details on the home page (www.jica.go.jp), or available directly from the JICA desk!

Feel free to get in touch with me regarding volunteering for JICA or international understanding education
Mari Kagami, Gifu Coordinator for International Cooperation, Gifu Prefecture JICA Desk
TEL : 058-263-8069 E-mail: jicadpd-desk-gifuken@jica.go.jp



A Taste of Autumn

There is a saying in Japanese- *Shokuyoku no Aki*- 'Autumn's appetite'. This refers to the appetite that you lost during summer returning, which makes everything taste better! Well, let us introduce some delicious autumn foods:

*^{くり}栗きんとん - Kurikinton

There are many shops famous for Kurikinton in Gifu Prefecture. The shops in Nakatsugawa City and especially in Ena City and have the biggest lines. Kurikinton is a snack made of sweet potatoes and sweetened chestnuts.



There is also plenty of fruit available that you cannot eat in any other season.

*^{かき}柿 - Persimmon

Gifu Prefecture's Fuyugaki Persimmons are highly recommended. They have sweet, juicy, soft flesh, and are renowned for their succulence.



*^{さんま}秋刀魚 - Pacific Saury

People cook this at home, and is best eaten charcoal-grilled. If you can't do that, then a gas grill is also fine. Sprinkle with kabosu citrus fruit or lemon while it's still hot, and eat it with some grated daikon (Chinese radish) and soy sauce on the side. Definitely give this a try.



*^{かぼちゃ}南瓜 - Pumpkin

If you boil autumn pumpkin by itself it will taste sweet like sweet potato, and have the same consistency as boiled chestnuts.



*^{まつたけ}松茸 - Matsutake Mushrooms

Matsutake mushrooms are delicious if you fry them by themselves and then eat them in the same way as Pacific Saury, with some kabosu or lemon, and soy sauce. It is also easy to put some into your rice cooker with your rice and have matsutake rice.



Become a member!

The GIC runs projects that support multiculturalism, international exchange, and international understanding. We have a membership system for people who want to support our aims financially.

- **Yearly Fees:** ¥3000 for individuals, ¥5000 for groups.
*Fees will be calculated on a monthly basis for applications made part way through the year for first time members.
- **Benefits:** Notifications about our international exchange or understanding projects.
Discounts and priority entrance to our fee based events (language courses, cooking classes etc.)
A copy of our international exchange information publication *Sekai Wa Hitotsu* posted to your residence.
Discounts from cooperating companies and retailers.
- **How to apply:** Please contact GIC directly

Advertise with us

We are looking for advertisements to display on our home page

(on the Japanese, English, Portuguese, Chinese and Tagalog sites).

and in our international exchange information publication

Sekai Wa Hitotsu

(in Japanese, English, Portuguese and Chinese).

For further details please enquire directly to the GIC.



Issued by: Gifu International Center (GIC)

Gifu Chunichi Building 2F, 1-12 Yanagase Dori, Gifu City, 500-8875
Tel: 058-214-7700 Fax: 058-263-8067
Three-way Call Civic Interpreter Service (Trio-phone): 058-263-8066
E-mail: gic@gic.or.jp URL: <http://www.gic.or.jp>
Opening hours: Sunday to Friday 9:30 am - 6:00 pm
Closed: Saturday, Public Holidays, New Year Period.

